



**OXLEY TOWERS**  
KUALA LUMPUR CITY CENTRE

**TIME TO OWN A KLCC ADDRESS**  
*Exclusively Managed by* 豪华公寓及酒店管理

**SO/ KUALA LUMPUR**  
SOFITEL

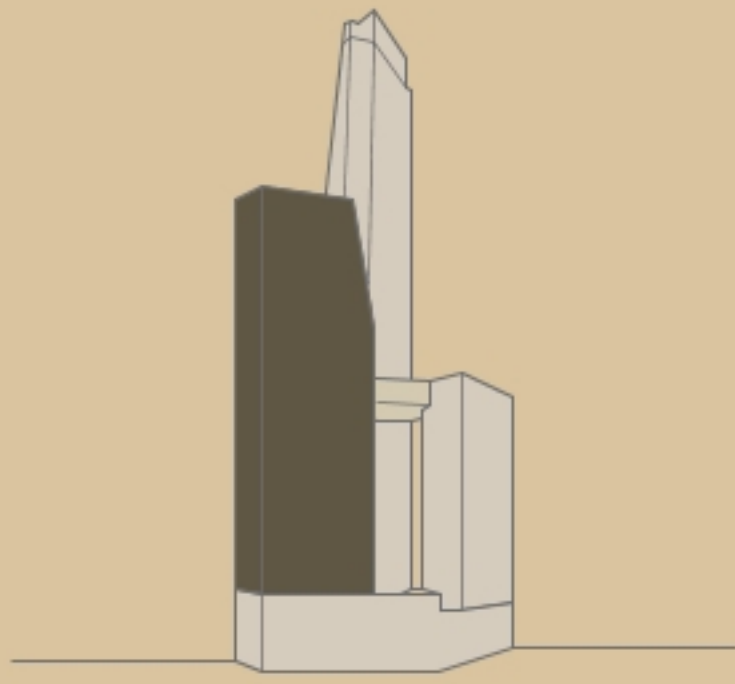


## AN OPPORTUNITY LIKE NO OTHER

### 绝无仅有的机遇

Freehold, in the heart of KLCC, next to the Petronas Twin Towers, this new development will rise – integrated with signature offices, exciting retail, 5-star hotels and branded residences. KLCC will never be the same again.

位于KLCC，国油双子塔地带的永久地契产业，这全新的发展将兴起结合豪华办公大楼、零售店、5星级酒店和名牌住宅。它的出现，将使KLCC焕然一新。



## PROJECT DEVELOPMENT MANAGED BY 项目发展管理

# PAVILION

Pavilion Group is a Malaysian-based world class property developer specialising in large scale retail mixed use developments in prime city centre locations in Malaysia and China.

The Group is renowned for its successful and award-winning Pavilion Kuala Lumpur integrated development.

With a dedicated team of Investment, Planning, Design and Development, Project Leasing and Marketing, Asset Management, and Real Estate Investment Trust (REIT) specialists, the Pavilion Group has completed several high-end mixed use developments in Kuala Lumpur City Centre such as the Pavilion Residences, Pavilion Suites and Elite Pavilion, Pavilion Banyan Tree Residences and Hotel.

The Pavilion Group is in the midst of completing two major integrated mixed use developments in Bukit Jalil and Damansara Heights, slated for completion in 2021 and 2022 respectively.

Pavilion 集团是一家总部设在马来西亚的世界级房地产开发商，专门从事马来西亚和中国黄金地段上的大型零售综合用途产业的发展。

该集团以吉隆坡柏威年 (Pavilion Kuala Lumpur) 综合发展项目一举成名。

Pavilion集团拥有一支由投资，规划，设计与开发，项目租赁和营销，资产管理以及房地产投资信托 (REIT) 专家所组成的团队，该集团已在吉隆坡市中心内完成多个高端混合发展项目，包括Pavilion Residences、Pavilion Suites和 Elite Pavilion、Pavilion Banyan Tree Residences 和酒店。

Pavilion集团正在武吉遮里尔 (Bukit Jalil) 和白沙罗高原 (Damansara Heights) 完成两项主要的综合用途发展项目，预计于2021年和2022年完成。



## SIGNATURE OFFICES

When your business and reputation demands the highest of standards, nothing less than the best will do.

The Oxley Towers Signature Office offers unsurpassed prominence, round-the-clock connectivity, proximity to major business amenities and world-class shopping districts.

当您的业务和声望需要更高的水平，只能追求最好。

Oxley Towers Signature办公室提供无以伦比的卓越，全天候连接，邻近都是世界级的主要商业设施和购物区。

## THE NEW STATUS SYMBOL FOR BUSINESS

### 商界新地位



Artist's Impression Only

## THE BOULEVARD

Retail therapy takes on a whole new meaning at this two-storey Galleria of trendy selections in the heart of Kuala Lumpur.

The 60,000 sf of retail space is suited to all types of retailers and brands. High foot traffic is expected from a direct link to the three towers of this prestigious development.

这座位于吉隆坡中心时尚的双层精选商店，给购物疗法带来全新定义。

60,000方尺的零售空间适合所有类型和品牌的零售业。衔接3座声望斐然的大楼，预计人潮将络绎不绝。

## RARE FIND IN THE CITY

### 城市中难能可贵购物区



Artist's Impression Only

# SO/ KUALA LUMPUR

SOFITEL

From eminent hotelier Accor Hotels comes the world's first ever So/ Kuala Lumpur Sofitel Hotel and Residences.

Mixing in the signature SO/ Sofitel blend of playful French elegance and exquisite Malaysian culture, this will definitely be the place to see and be seen.

来自国际著名酒店集团雅高酒店带来了世界首个吉隆坡 SO/ 索菲特酒店和豪华公寓。

SO/ 索菲特混合了活泼的法国优雅和精致的风情，及马来西亚独特的文化，成为一个众人期待，万众瞩目的地方。

## SO/ SOFITEL MAKES ITS MALAYSIAN DEBUT

### 马来西亚风格的SO/ 索菲特

**LEVEL 46**  
Lounge, Reading Room, Multipurpose Hall, Gym, Yoga Room, Sauna, Screening Room, Sky Garden

休息室/阅览室, 多用途厅, 健身室, 瑜伽室, 桑拿房, 放映室, 空中花园

**LEVEL 77**  
Pool, Jacuzzi, BBQ Pit, Cabana, Kid's Pool, Kid's Playground, AV Room

游泳池, 按摩浴池, 烧烤区, 甲板休息区, 儿童池, 儿童游乐场, 影音室

**LEVEL 45**  
Entertainment Room

娱乐室

**LEVEL 8**  
Hotel Facilities

酒店设备

**LEVEL 7**  
Hotel All Day Dining

酒店全日式餐厅

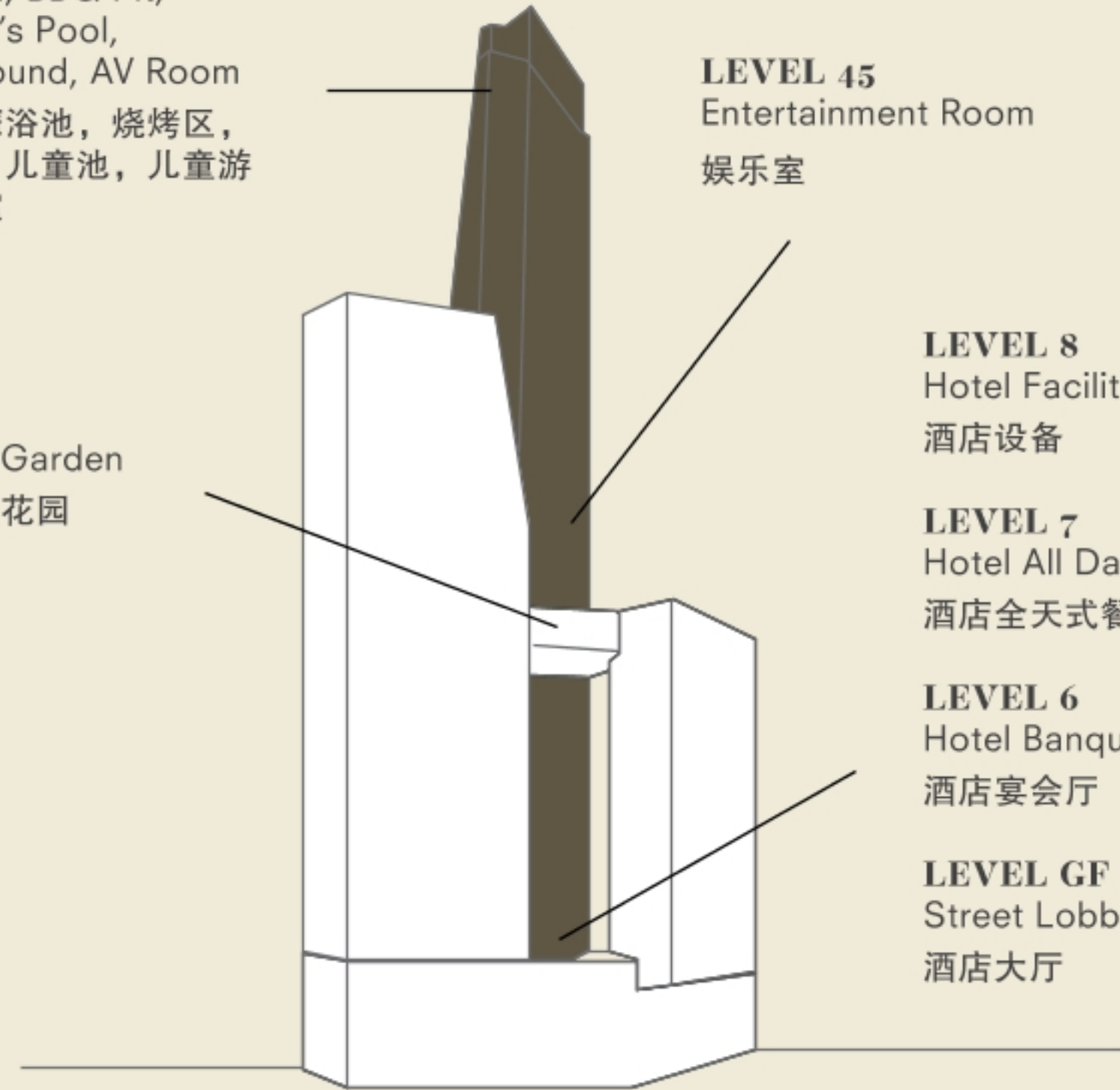
**LEVEL 6**  
Hotel Banquet Hall

酒店宴会厅

**LEVEL GF**  
Street Lobby

酒店大厅

Sky Garden  
空中花园



Artist's Impression Only

OXLEY TOWERS  
**1<sup>st</sup> CLASS FACILITIES TO ENTERTAIN THE WORLD'S ELITE**

款待世界精英的一级娱乐设备

Feel right at home with the world's elite and global jetsetters here at Oxley Towers. Home to Malaysia's tallest residential swimming pool, two sky decks and a 25,000 sf public plaza that leads directly to the 50-acre KLCC Park.

Certified BCA GREEN MARK, life at Oxley Towers is truly sustainable and energy efficient.

世界各地的精英，到 Oxley Tower 将宾至如归。马来西亚最高的住宅泳池，两个露天甲板和 25,000 平方英尺的共用场所，以及直达 50 英亩 KLCC 公园的便利。

BCA GREEN MARK 证书，Oxley Towers 的生活真正反映可持续和永续的生活。



Energy savings up to 20%  
 节能高达20%



Water conservation up to 30%  
 节水高达30%



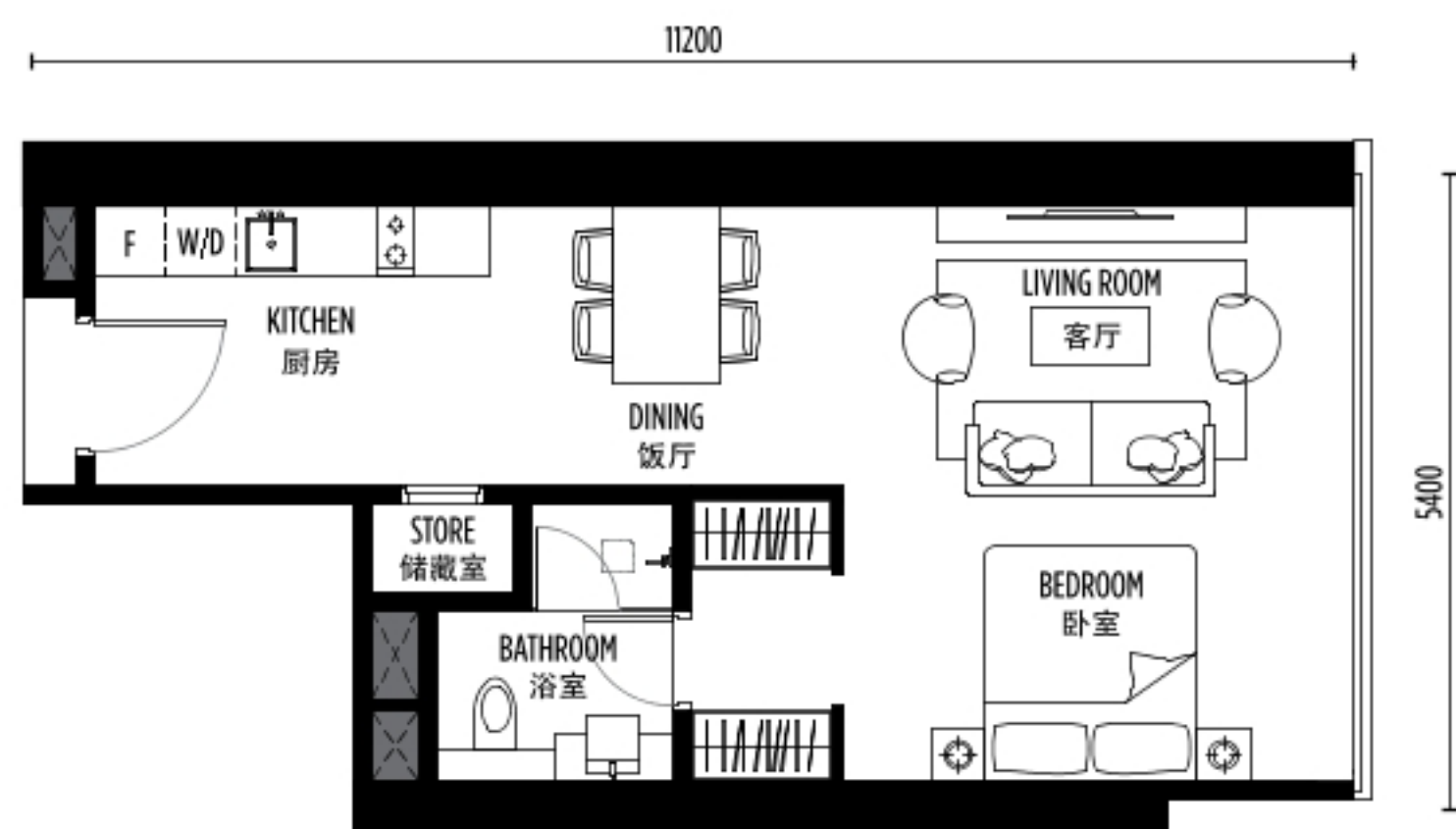
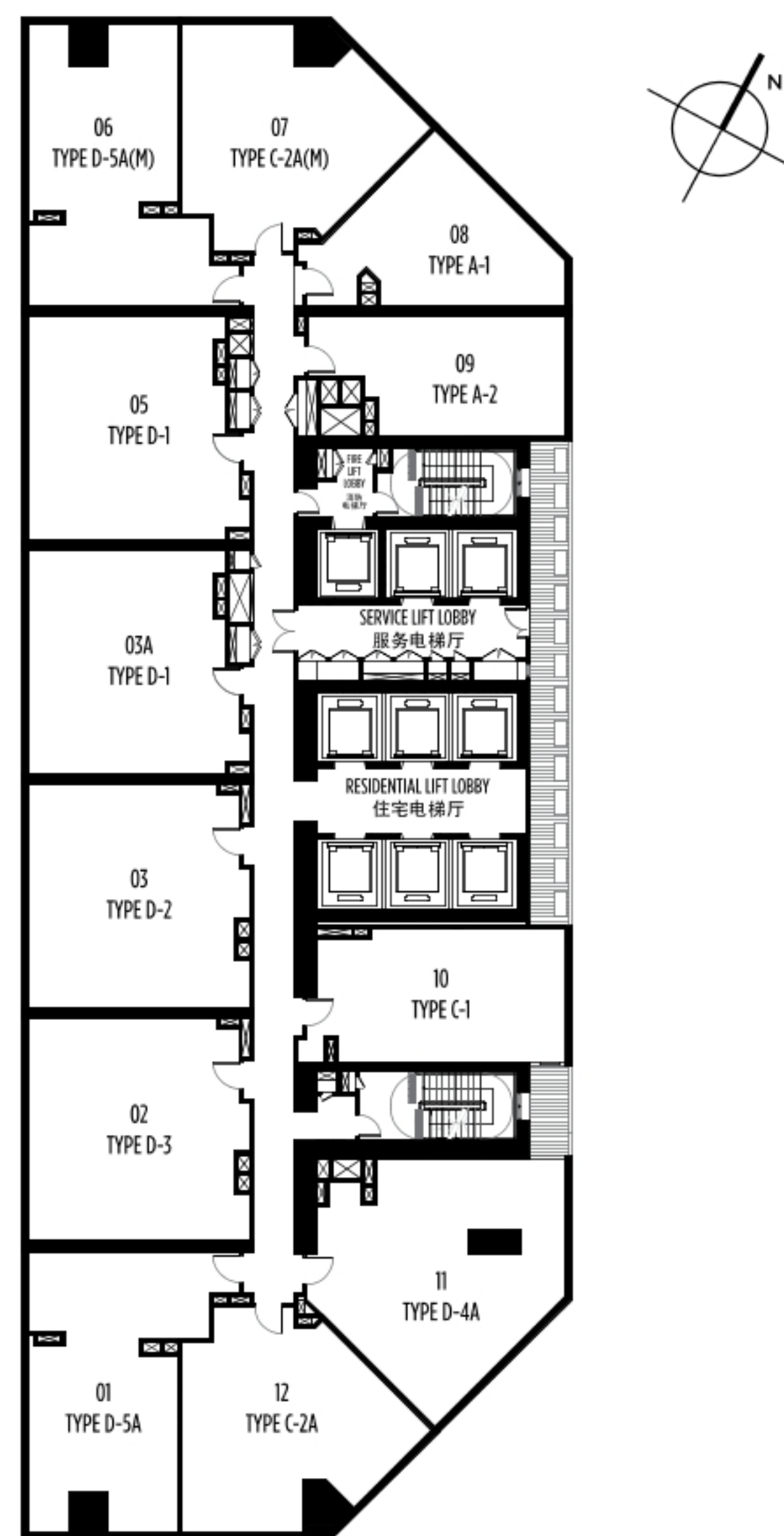
Optimum indoor temperatures via high performance glazing windows  
 通过高性能窗户优化室内温度



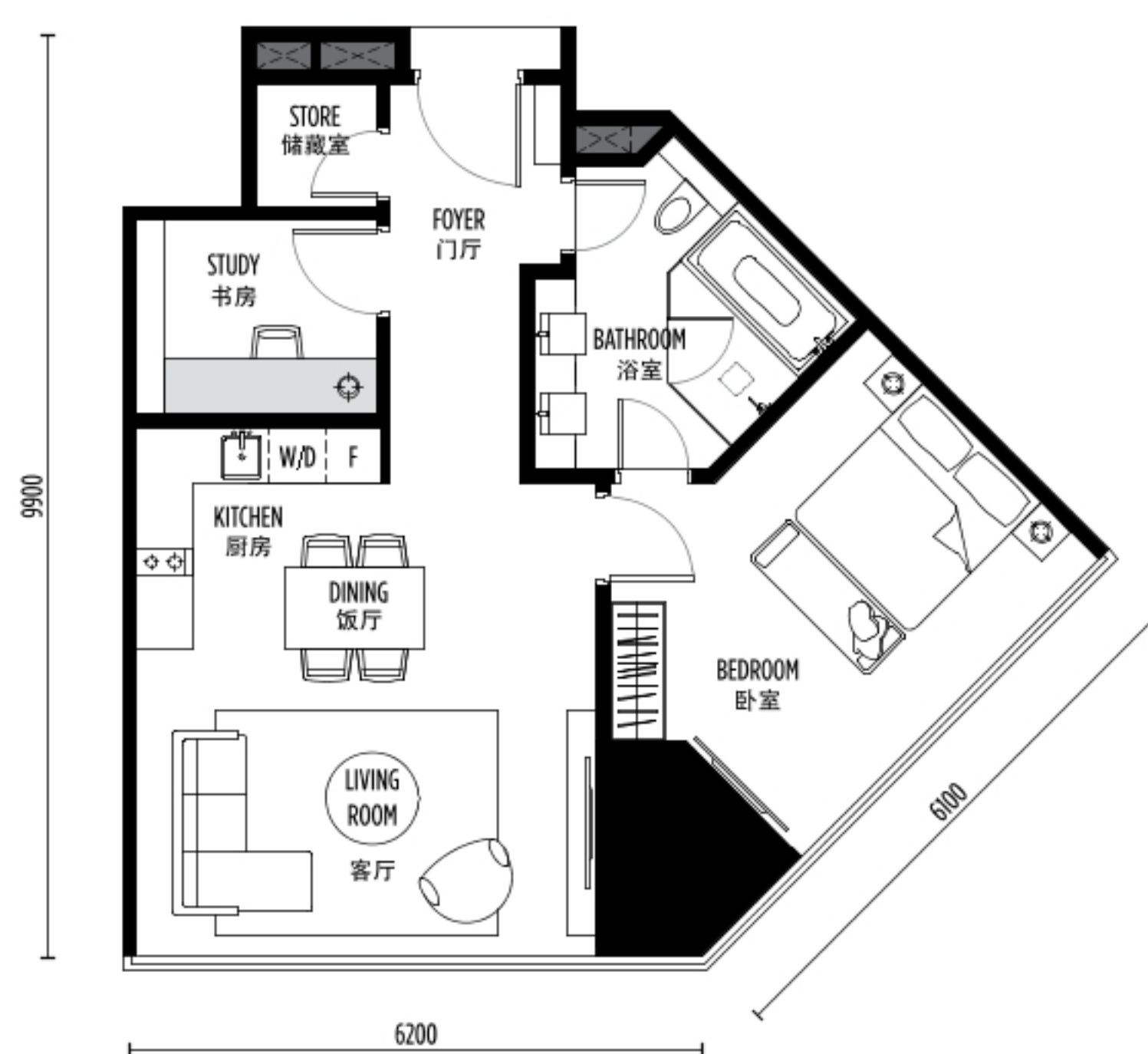
Sophisticated rainwater harvesting system  
 先进的雨水收集系统

TYPICAL FLOOR LAYOUT  
 典型楼层格局

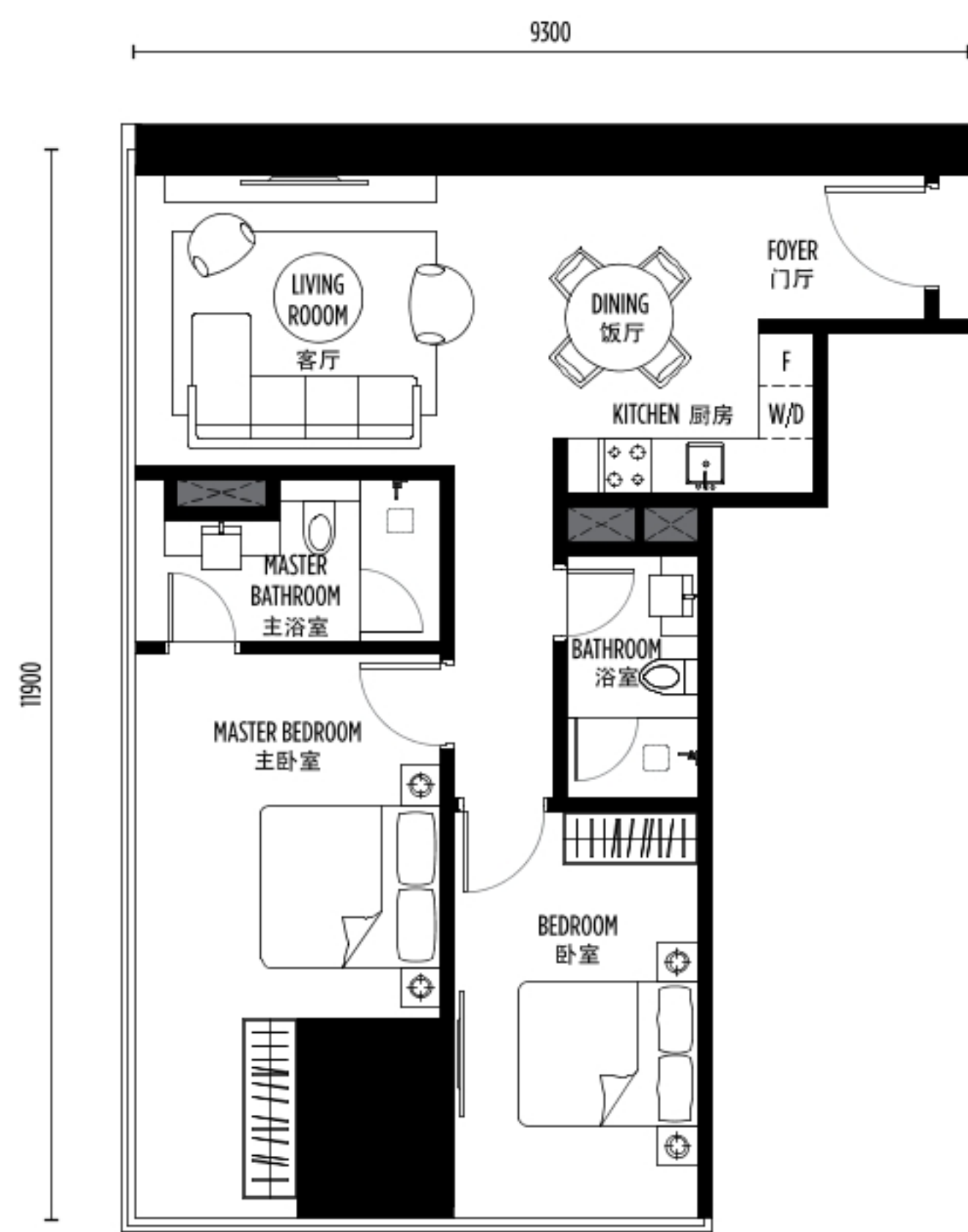
**LEVEL 34-43 / 47-51 楼**



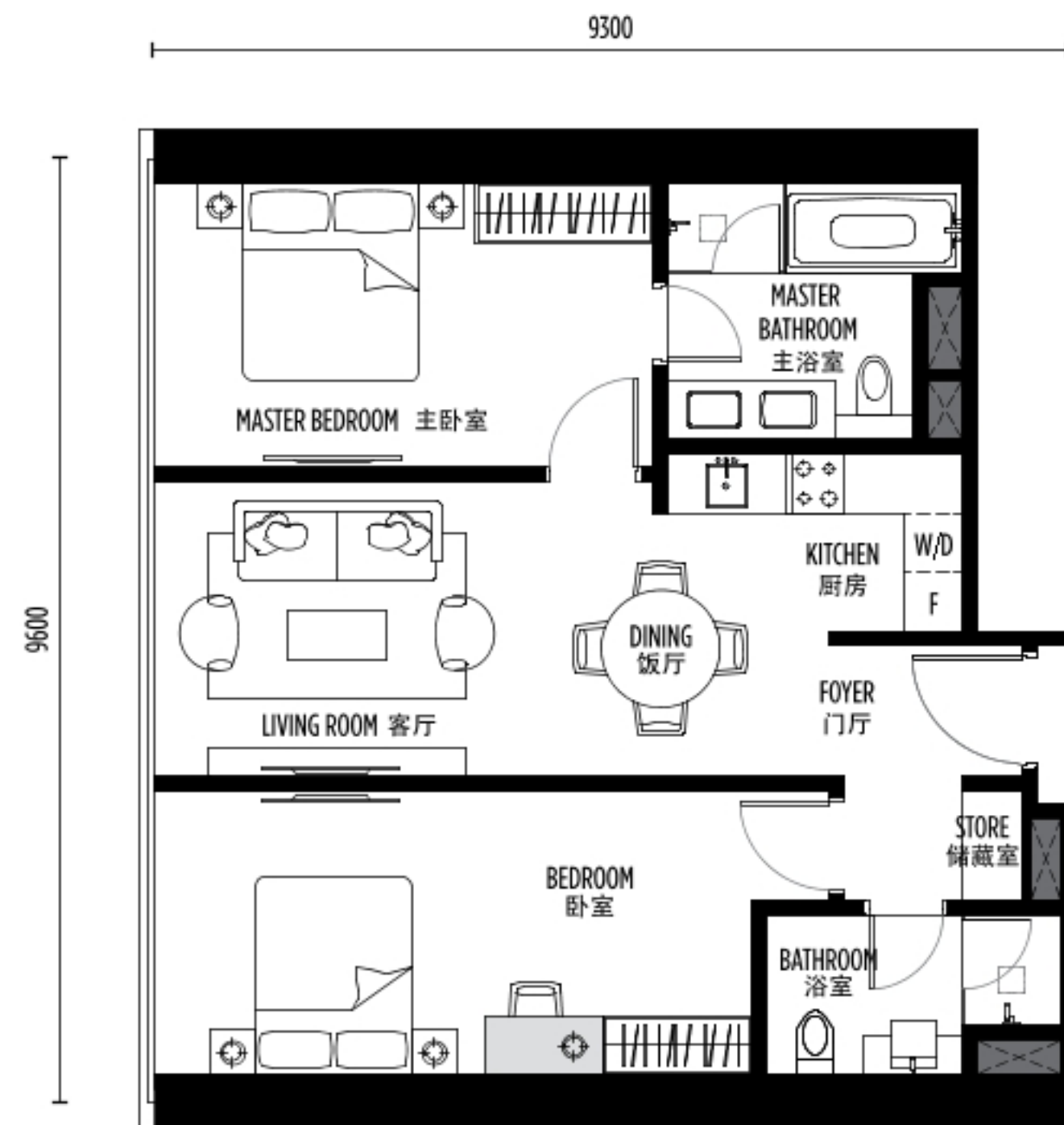
**TYPE A-2 户型**  
**STUDIO 套房**  
 53 SQ.M. 平方米 / 566 SQ.FT. 平方英尺



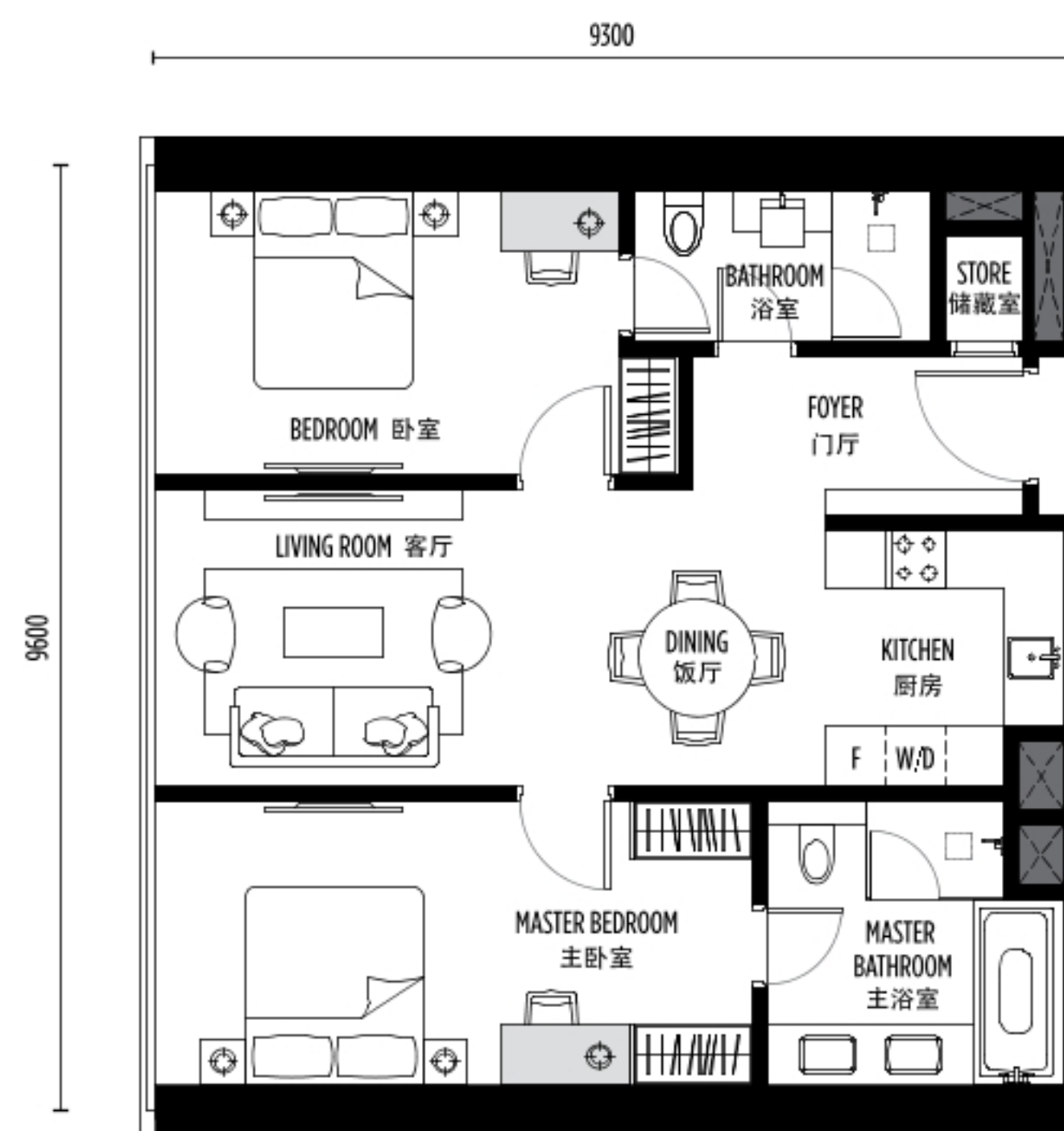
**TYPE C-2A 户型**  
**1+1 BEDROOMS 房**  
 76 SQ.M. 平方米 / 815 SQ.FT. 平方英尺



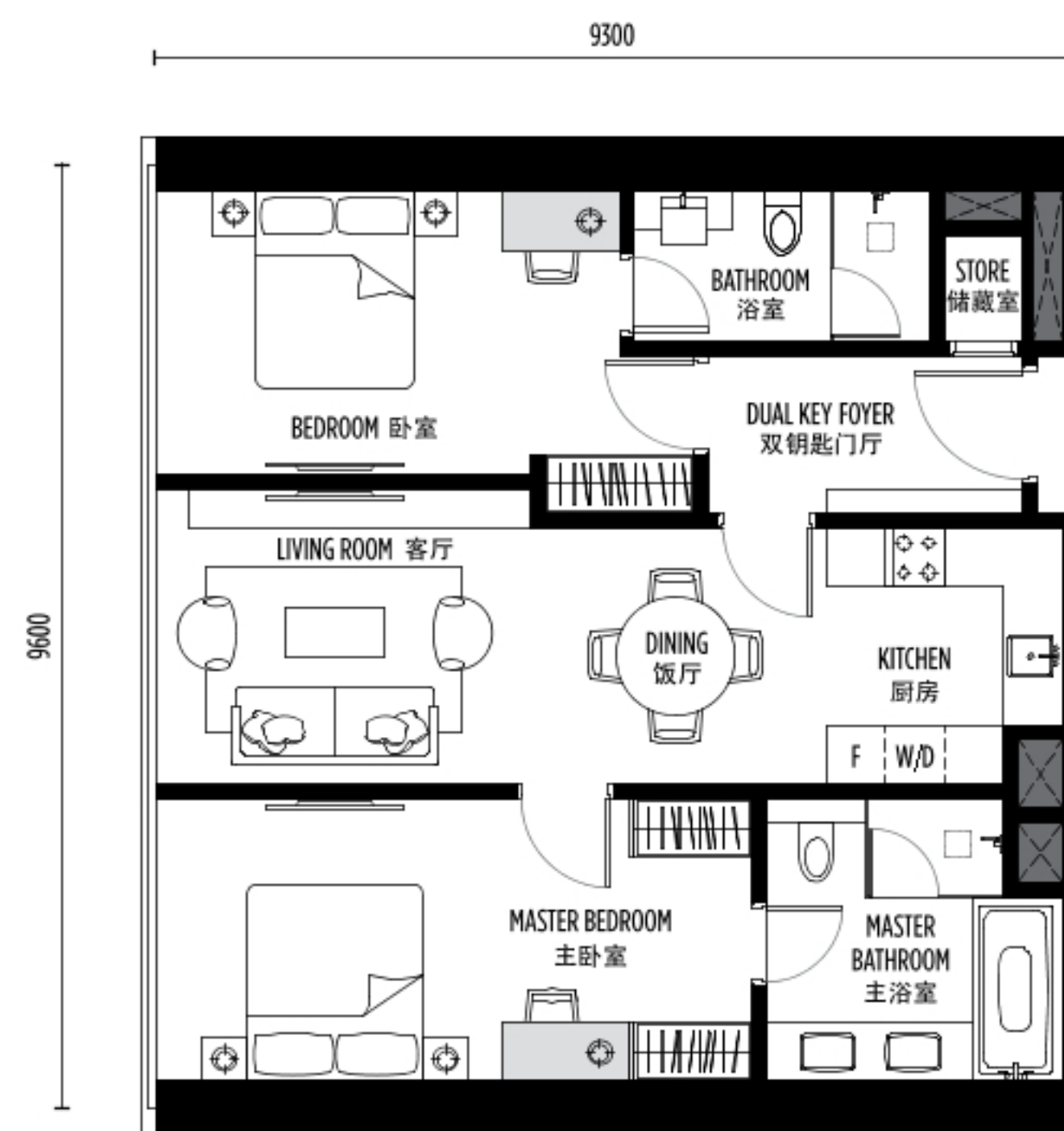
**TYPE D-5A 户型**  
**2 BEDROOMS 房**  
 83 SQ.M. 平方米 / 894 SQ.FT. 平方英尺



**TYPE D-1 户型**  
**2 BEDROOMS 房**  
 84 SQ.M. 平方米 / 903 SQ.FT. 平方英尺



**TYPE D-2 户型**  
**2 BEDROOMS 房**  
 89 SQ.M. 平方米 / 956 SQ.FT. 平方英尺



**TYPE D-3 (DUAL KEY) (双钥匙) 户型**  
**2 BEDROOMS 房**  
 89 SQ.M. 平方米 / 956 SQ.FT. 平方英尺

# ACCESSIBILITY AS AN ASSET

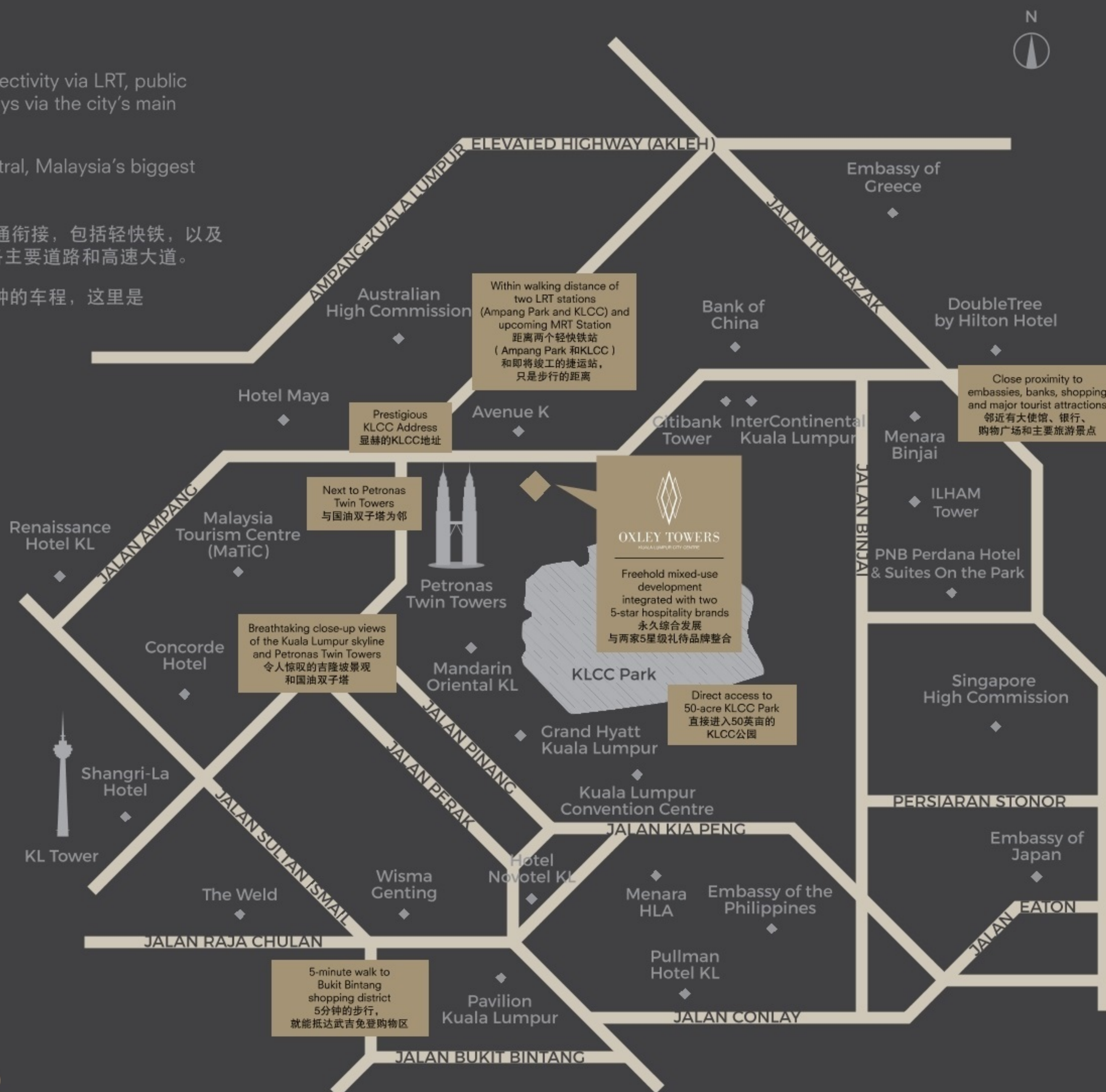
## 易于抵达的产业

Well-located, Oxley Towers has excellent connectivity via LRT, public transportation and links to major roads/highways via the city's main artery, Jalan Sultan Ismail and Jalan Ampang.

For the business set and globetrotters, KL Sentral, Malaysia's biggest transportation hub is just 8 minutes away.

卓越地点，Oxley Towers有非常便捷的公共交通衔接，包括轻快铁，以及各主要干线例如苏丹依斯迈路和安邦路，衔接各主要道路和高速大道。

距离马来西亚最大交通枢纽KL Sentral只是8分钟的车程，这里是国际商旅的绝佳地点。



## THE DEVELOPER

### 发展商

Oxley Holdings Limited ("Oxley" or "the Group") is a home-grown Singaporean property developer, engages in the business of property development and property investment.

Since its inception, the Group's accelerated growth has resulted in a burgeoning presence both locally and overseas. With a dynamic presence across twelve geographical markets, Oxley is listed on the Main Board of the SGX-ST with a market capitalisation of approximately S\$2.12 billion.

The Group has a diversified portfolio comprising development and investment projects in Singapore, the United Kingdom, Ireland, Cyprus, Cambodia, Malaysia, Indonesia, China, Australia, Myanmar and Vietnam.

Oxley's property development portfolio encompasses choice residential, commercial and industrial projects. Key elements of the Group's choice developments include prime locations, desirable lifestyle features and preferred designs.

In 2013, the Group acquired a 20% stake in Galliard (Group) Limited, a leading property developer in the United Kingdom. Galliard (Group) is a property development, hospitality and management group overseeing a wide variety of developments across London and Southern England.

Oxley also acquired a 40% stake in Pindan Group Pty Ltd, an integrated project group based in Western Australia, and a 15% stake in United Engineers, a Singaporean property development and engineering company that was founded in 1912.

Oxley Holdings Limited (简称“Oxley”或“该集团”)是新加坡发展商，投身的业务包括产业发展和产业投资。

自成立以来，该集团积极开拓，使国内外业务积极成长。该集团业务横跨12个地区的市场，Oxley也是新加坡交易所主板的上市的企业，市值约21亿2000万新元。

该集团投资组合多元化，包括在新加坡、英国、爱尔兰、塞浦路斯、柬埔寨、马来西亚、印尼、中国、澳洲、缅甸和越南开发和投资。

Oxley的产业开发组合包含精选的住宅、商业与工业项目。在挑选开发项目时，该集团首要考虑的元素是卓越地点、理想的生活方式和首选的设计。

2013年，该集团收购英国首要产业开发商Galliard (Group) Limited 20%股权。Galliard集团是一家产业开发商，酒店礼待和管理集团，管理遍布伦敦和英格兰南部的各种地产开发。

Oxley也收购澳洲西部著名的综合项目集团Pindan Group Pty Ltd 40%股权，以及于1912年在新加坡成立的产业发展与工程公司United Engineers 15%股权。



DEVELOPER: **OXLEY RISING SDN BHD**  
Unit 1-26, Level 26, NAZA Tower, Platinum Park  
No. 10, Persiaran KLCC, 50088 Kuala Lumpur, Malaysia

Project development managed by  
项目发展管理

**PAVILION**

聯繫我們：+603-2935 9393 (8:00am - 7:00pm)

Whatsapp：+6019-537 8128 (24小時)

Project Name: Menara Oxley • Developer: Oxley Rising Sdn. Bhd. (1053340-P), Unit 1-26, Level 26, NAZA Tower, Platinum Park, No. 10, Persiaran KLCC, 50088 Kuala Lumpur, Malaysia • 22/02/2022 • Advertising & Sale Permit No.: 19325-1/02-2022/01176(P) • Validity: 23/02/2021 - 22/02/2022 • Approving Authority: Dewan Bandaraya Kuala Lumpur • Building Plan Approval No.: BP T3 OSC 2015 2770 • Land Tenure: Freehold • Land Encumbrances: Bank Islam Malaysia Berhad • Type Of Property: Serviced Suites • Expected Date of Completion: May 2023 • Bumiputera Discount: 5% • Total No. of Units: 590 units (Tower 1); 267 units (Tower 2) • Price: RM1,400,000.00 (Min.) - RM17,435,000.00 (Max.) (Tower 1); RM1,784,000.00 (Min.) - RM3,759,000.00 (Max.) (Tower 2) • Built-up Area: 565 sf (Min.), 5,167 sf (Max.) (Tower 1); 563 sf (Min.), 1,208 sf (Max.) (Tower 2)

IKLAN INI TELAH DILULUSKAN OLEH JABATAN PERUMAHAN NEGARA

The information, specifications, perspectives and plans herein contained may be subject to amendments as may be required by the relevant authorities or the Developer's consultants. All specifications, drawings and plans are preliminary or artist's impressions only. While care has been taken to ensure the accuracy of images in this publication, some images may have been edited for marketing purposes and these images may not represent all the actual buildings and/or immediate surroundings of Oxley Towers and in providing the information, specifications, perspectives and plans herein contained the Developer shall not under any circumstances be held liable, responsible or accountable for any inaccuracies and revisions or changes that may be made from time to time and at any time, with or without notice being given by the Developer, or for any losses, liabilities and damages that may arise therefrom.